

MILK COOLING TANK with ICE WATER COOLING

RM/IB

1600 - 15400 l

Characteristics

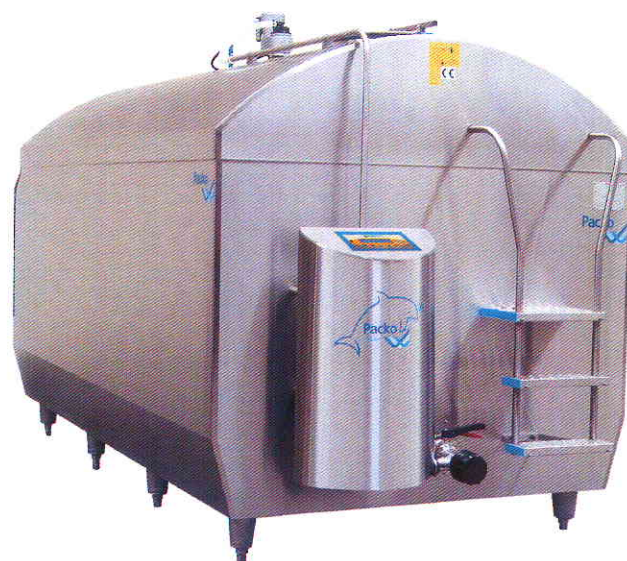
- ›Horizontal tank with efficient evaporator made of seamless copper tubes
- ›Constructed of stainless steel 18/10 – AISI 304
- ›Chassis with solid leg construction and adjustable feet (standard 2 % slope)
- ›Flat manhole and swivelling cover with rubber seal
- ›Detachable air vent
- ›2 milk inlet openings, 80 mm (1 in the manhole cover, 1 at the back)
- ›Tank outlet 80 mm, self washing outlet with butterfly valve and road tanker connection NW 50 or 65 (other milk road tanker connections on request, e.g. SMS, DS, RJT or IDF)
- ›"Self washing outlet" easy to upgrade (no welding). Increased second hand value.
- ›All models have a stainless steel ladder
- ›Tank conform EN 13732 standard

Tank control and display

- ›All electrical tank components 1 ~ 230V – 50Hz (other voltages / frequencies on request)
- ›Milk temperature control with electronic operating unit DOLPHIN, time clock for use of night rate electricity integrated
- ›Digital temperature indication with large LCD display
- ›Deep cooling (1.9 °C)
- ›Two adjustable set points (3.2 °C and 4.5 °C)
- ›Full automatic logging of cooling, agitation, cleaning and possible errors

Cooling and agitation

- ›All the benefits of cooling with ice water apply
- ›An **integrated ice builder** provides the ice water
- ›Very fast cooling with no risk of freezing even the smallest quantities of milk
- ›A high cooling capacity is guaranteed
- ›The number of agitator motors depends on the volume of the tank (see table tank dimensions)
- ›Instant cooling is possible by installing a tubular or plate heat exchanger between the milking parlour and the tank. It is an important advantage to safeguard the quality of the milk.

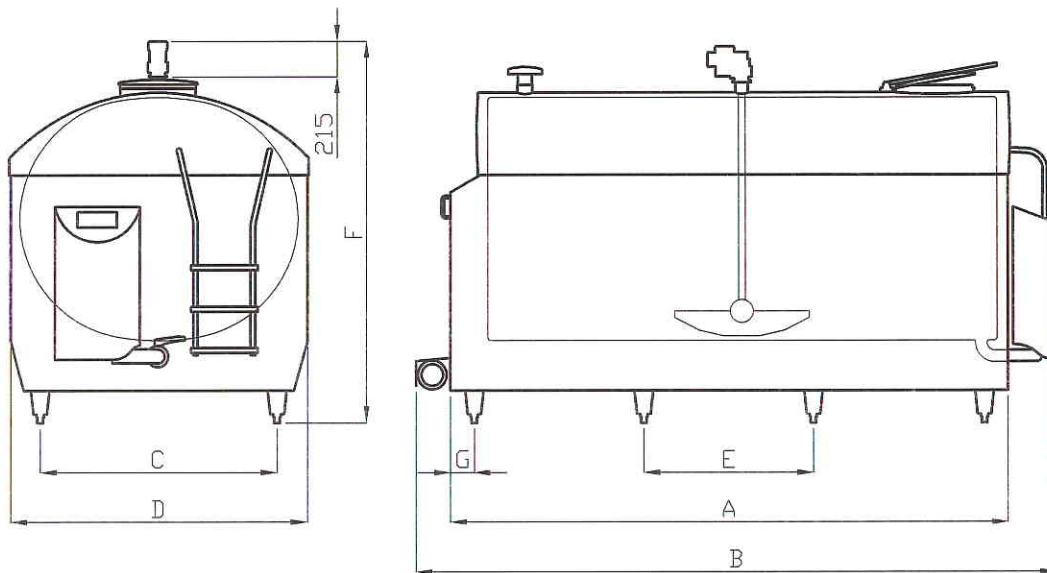


Cleaning

- ›1 dosage cup standard
- ›Automatic water level control for optimal filling and low water usage
- › High pressure dynamic Packo-ROTOJET system with spray balls in agitator blade(s)
- ›Vertically mounted stainless steel cleaning pump, no risk of freezing
- ›Pump power depends on number of agitators:
 - 1 agitator: 1.1 kW, 1 ~ 230V 50Hz
 - 2 agitators: 1.5 kW, 1 ~ 230V 50Hz

Available options

- ›Warning messages sent by SMS
- ›Timer for manual cooling and cleaning
- ›Automatic dosing pumps for detergents
- ›ECO-WASH short cleaning
- ›Tank adapted to AMS milking
- ›OCULUS tank guard to monitor all tank functions
- ›PACAP digital volume indication with LED display
- ›Extra ice water pump for instant cooling



RM/IB Dimensions

Model	Max. cap. litres	Milkings	A mm	B mm	C mm	D mm	E mm	F mm	G mm	Legs number	Weight kg
1600	1678	2	2185	2765	925	1300	1895	1825 - 1945	145	4	464
2200	2237	2	2818	3398	925	1300	1264	1825 - 1945	145	6	584
2800	2813	2	2010	2590	1440	1800	860	2179 - 2299	145	6	682
3300	3367	2	2350	2930	1440	1800	1030	2179 - 2299	145	6	750
3800	3881	2	2665	3245	1440	1800	1188	2179 - 2299	145	6	830
4400	4484	2	3035	3615	1440	1800	1373	2179 - 2299	145	6	980
5000	5039	2	3375	3955	1440	1800	1029	2179 - 2299	145	8	1076
6000	6038	2	4000	4580	1440	1800	1237	2173 - 2293	145	8	1240

Model	Max. cap. litres	Milkings	A mm	B mm	C mm	D mm	E mm	F mm	G mm	Legs number	Weight kg
1600	1678	4	2185	2765	925	1300	1895	1630 - 1750	145	4	429
2200	2237	4	2818	3398	925	1300	1264	1630 - 1750	145	6	525
2800	2813	4	2010	2590	1440	1800	860	1996 - 2116	145	6	601
3300	3367	4	2350	2930	1440	1800	1030	1996 - 2116	145	6	655
3800	3881	4	2665	3245	1440	1800	1188	1996 - 2116	145	6	730
4400	4484	4	3035	3615	1440	1800	1373	1996 - 2116	145	6	860
5000	5039	4	3375	3955	1440	1800	1029	1996 - 2116	145	8	940
6000	6163	4	3375	3955	1440	1800	1029	2269 - 2389	145	8	1050
7150	7320	4	4000	4580	1440	1800	1237	2269 - 2389	145	8	1300
9650	9899	4 & 6	4000	4580	1510	2256	800	2526 - 2646	145	10	1690
12400	12665	4 & 6	5041	5621	1510	2256	800	2526 - 2646	145	12	1930
15400	15722	4 & 6	6217	6797	1540	2256	800	2526 - 2646	145	16	2380

With ECO-WASH: B + 190 mm.
Available in 2, 4 & 6 Milkings and AMS milking.

Subject to modifications. The photographs and descriptions provided are intended as a guide and may not always exactly match the items supplied.

RM/IB 1600-5000 2 milkings and RM/IB 6000 4 milkings:
1 agitator incorporating 1 rotojet spray ball.
RM/IB 6000 2 milkings and RM/IB 7150-15400 4-6 milkings:
2 agitators incorporating 4 rotojet spray balls.

